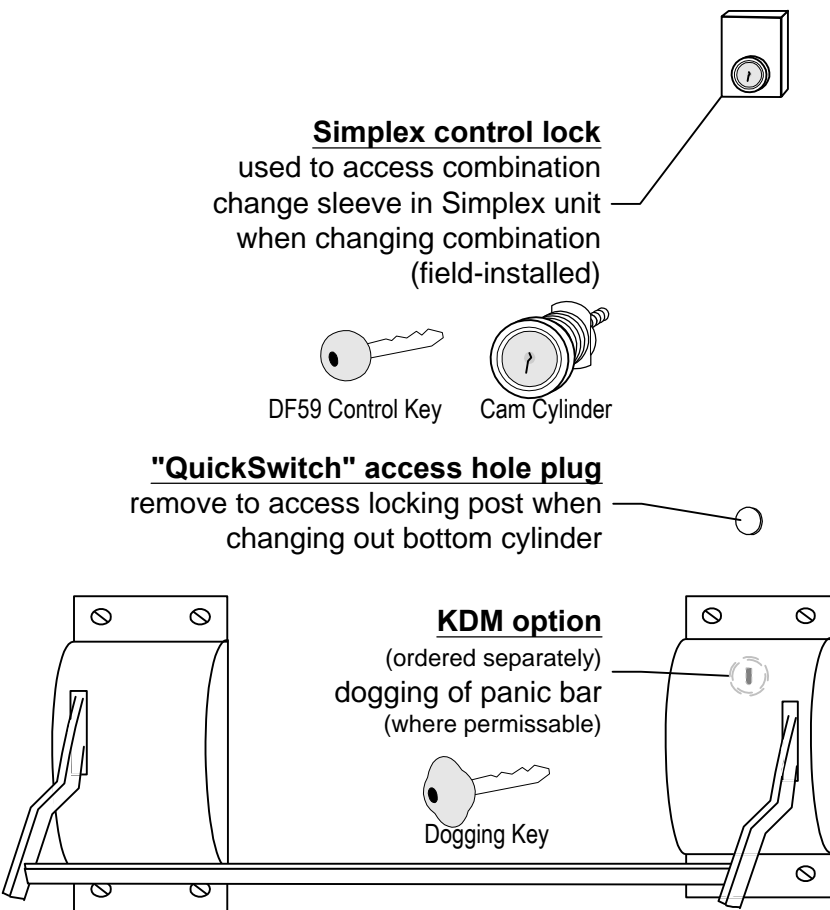


OPERATIONS: Key and Cylinder Info 8155-PB P*E*D*S CENTURION also used for 8156, 8255, 8256 (with additional information)

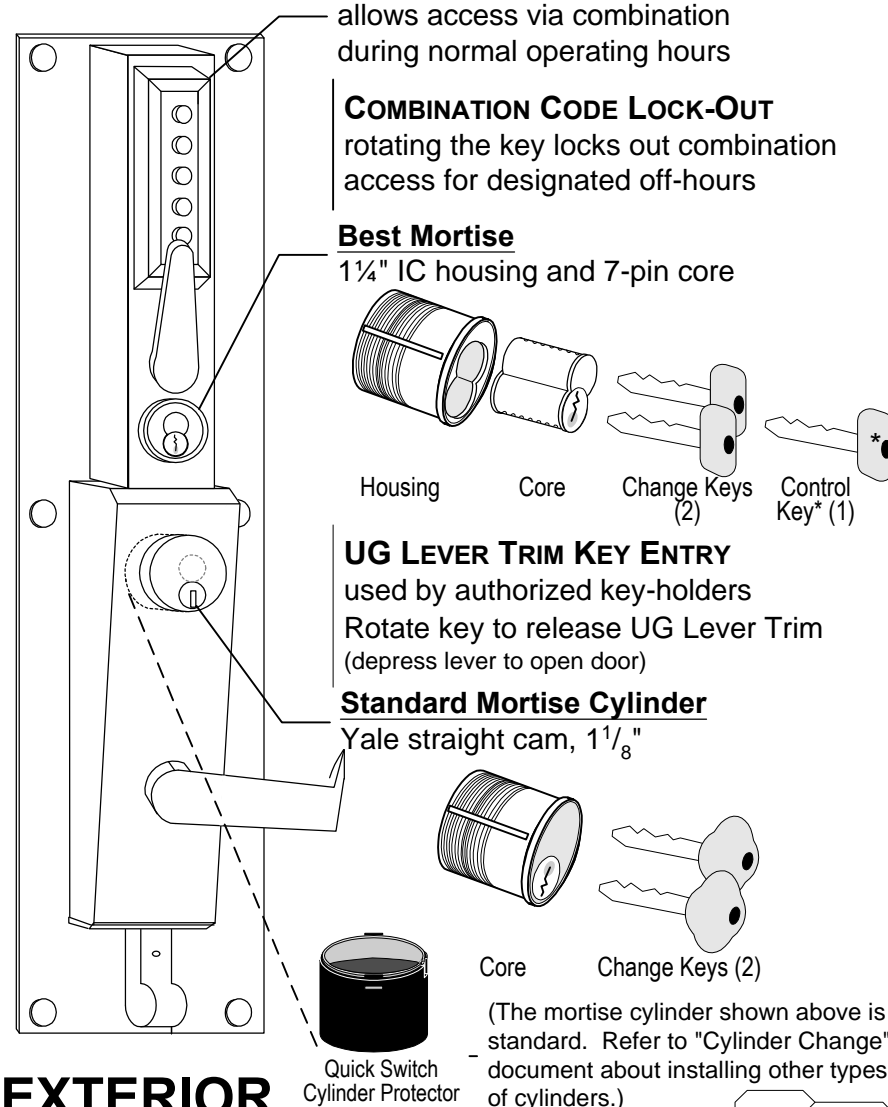
Your new 8155 P*E*D*S Centurion comes with the following factory-installed cylinders and keys to match.

The Best compatible cylinder in the Simplex unit has an interchangeable construction core, which should be replaced after installation is complete and the lock is working to your satisfaction. The housing accommodates a 7-pin core.

The standard mortise cylinder in the UG Lever Trim unit can be replaced with various kinds of cylinders. Refer to SGI document "Cylinder Change" for more information and instructions on changing out the UG Lever Trim cylinder.



INTERIOR



EXTERIOR



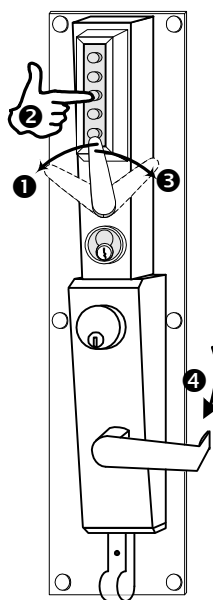
SECURITECH™

Securitech Group, Inc. 54-45 44th St. Maspeth, NY 11378 (800)622-LOCK (718) 392-9000 Fax: (718)392-8944 www.securitech.com

OPERATIONS: HOW TO USE 8155PB P*E*D*S CENTURION

also used for 8156,8255,8256 (with additional information)

Normal Operation

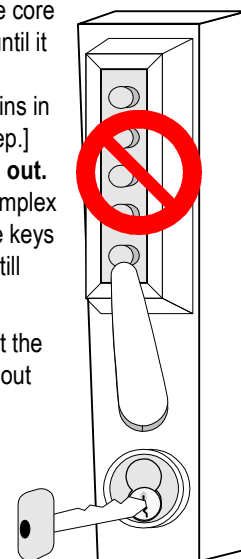


- 1 Clear** any previous button entries by turning the Simplex lever left (CCW) to the 10 o'clock position and releasing (back to 12 o'clock position).
- 2 Enter** the combination code. [FACTORY CODE: 2 & 4 PRESSED SIMULTANEOUSLY, THEN 3.] Fully release the buttons after each depression (click felt each time).
- 3 Release** the Simplex lock by turning the thumb lever right (CW) to the 2 o'clock position.
- 4 Depress** the UG Lever Trim handle to retract the deadbolt and **open** the door.

NOTE: The thumb lever should rotate smoothly and easily to proper positions during normal operation. While code access is denied, it is possible to force (to be avoided!) the thumb lever to 3-, 6- and 9 o'clock positions, but that still won't allow access. If lever is not at rest in 12 o'clock position, simply rotate it to that stop.

Locking Out Code Access

- 1 Insert** construction key into upper removable core cylinder and turn counter-clockwise (CCW) until it stops (about 15°). Return key to 12 o'clock position and remove. [The thumb lever remains in the 12 o'clock position as well during this step.] Access via combination code is now **locked out**. The thumb lever is not movable while the Simplex unit is locked out. Those authorized to have keys for the UG Lever Trim (lower cylinder) can still unlock the door.
- 2 To return** to combination code access, insert the construction key and turn clockwise (CW) about 45° [audible click]. Return key to 12 o'clock position and remove.



Change Simplex Code

READ INSTRUCTIONS ENTIRELY BEFORE STARTING!

FACTORY CODE
2 & 4 together, 3
(change after first use)

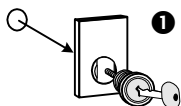
NEW CODE

NEW CODE

NOTE: Each digit can be used **only once** in a combination.

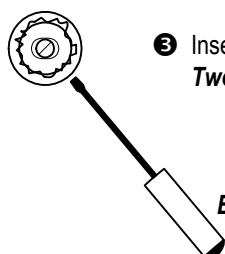
Make sure you have

- the proper tools: A) DF59 control key B) 1/8" flathead screwdriver (both provided)
- the original combination
- the lock in normal operation mode
- the door open throughout the procedure



- 1 Remove** the Simplex control lock from the secure side of the door using the DF59 key provided. Key must be turned counter-clockwise until the entire assembly (including brass threaded rod and lock washer) can be removed from the stile. The combination change sleeve should be visible.

Clear any combination entries by turning the thumb lever left (CCW) to 10 o'clock.
Enter the current combination code, fully pressing and releasing each button. (click felt each time)



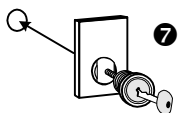
- 3 Insert** the 1/8" screwdriver provided into the combination change sleeve, where there is a small slot. **Tweak** it 30° to the right (CW) until you feel a click; **twist back (CCW) to original position and remove.**

Clear combination lock again by turning thumb lever left (CCW) to 10 o'clock.

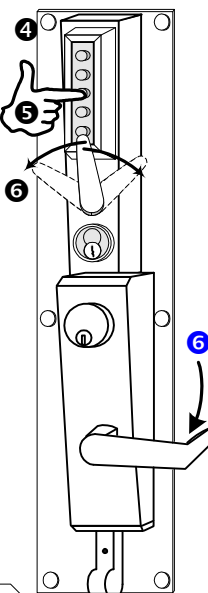
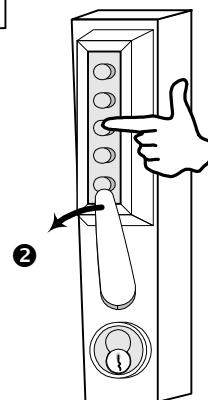
Enter new combination code carefully, fully pressing and releasing each button with a perceptible click.
Remember, you cannot use the same number button more than once in a combination.

Turn thumb lever right (CW) to 2 o'clock.

Ensure that the lock is **released** by depressing UG Lever Trim handle to retract deadbolt.



- 7 The new combination** is now set. Make note of it above and keep in a safe place. Reinstall control lock assembly on inside of door, turning key clockwise. **Remove** key at 9- or 12 o'clock positions.



* If the lock is in a **Zeroed-out** status, i.e. **the thumb lever will open without entering any combination**, you can set a new code by following the above steps. However, skip the second part of step 2 where it says to **enter** the current code, since there is none at the time.

* If the **Combination** is **unknown**, please call the factory for further instructions.



SECURITECH GROUP, INC.

54-45 44TH STREET MASPETH, NY 11378 (800) 622-LOCK (718) 392-9000 FAX: (718) 392-8944

opm8155pb v2.vsd
Pg. 1 of 2
11/01/2001